



Lund University

2022 | EDUCATION, RESEARCH AND COLLABORATION SINCE 1666





A WORLD-CLASS UNIVERSITY

To understand, explain and improve

Lund University was founded in 1666 and, ever since, has been a centre of culture and learning. One of our strengths is our unique disciplinary range and our ability to generate boundary-crossing collaboration. Student influence, internationalisation and close cooperation with wider society are other characteristics of Lund University.

OUTSTANDING RESEARCH

Our nine faculties conduct strong research in a wide range of areas. Many scientific breakthroughs and pioneering innovations have originated from Lund University.

AN INTERNATIONAL UNIVERSITY

Our strong reputation helps to attract students and researchers from all over the world. More international students apply to Lund than to any other university in Sweden. We collaborate with some 650 universities in approximately 70 countries and we are the only Swedish university to be a member of the international research networks League of European Research Universities (LERU) and Universitas 21 (U21).

A WIDE RANGE OF STUDY PROGRAMMES

Our study programmes are closely intertwined with current research and we have one of the widest ranges of study programmes in Sweden, including several unique interdisciplinary programmes for both Swedish and international students.

WORLD-LEADING RESEARCH FACILITIES

Two of the world's foremost research facilities for materials research and life sciences are established in Lund – the synchrotron radiation facility MAX IV and the European Spallation Source (ESS), the world's most powerful neutron source, which will be fully operational by the end of 2027.

OPEN ACTIVITIES

The University offers many open activities, not least the public events at Skissernas Museum – Museum of Artistic Process and Public Art, the Botanical Garden and the Historical Museum.



LUND UNIVERSITY IN BRIEF

FOUNDED: 1666

MOTTO: Ad utrumque (paratus),
prepared for both

NUMBER OF STUDENTS: 46 000

NUMBER OF EMPLOYEES: 8 400

ANNUAL TURNOVER: EUR 912 million

RANKING (2020/21):

QS World University Rankings: 87

Times Higher Education: 116

Shanghai ranking: 151–200

FACULTIES:

- School of Economics and Management
- Faculty of Engineering, LTH
- Faculty of Fine and Performing Arts
- Faculties of Humanities and Theology
- Faculty of Law
- Faculty of Medicine
- Faculty of Science
- Faculty of Social Sciences

The University also comprises MAX IV, the International Institute for Industrial Environmental Economics IIIEE, The Pufendorf Institute for Advanced Studies and several other inter-disciplinary centres and facilities open to the general public, such as Skissernas Museum – Museum of Artistic Process and Public Art. The Raoul Wallenberg Institute of Human Rights and Humanitarian Law is also closely associated with the University.

LOCATIONS: Lund, Malmö, Helsingborg and Ljungbyhed



EDUCATION

A meeting-place for international students

Lund University has Scandinavia's largest range of education taught in English, and one of Sweden's broadest ranges of study programmes in engineering, science, law, social science, economics and management, medicine, humanities, theology and the fine and performing arts. We offer degree programmes and freestanding courses at Bachelor's, Master's and PhD levels.

We educate the knowledge generators, problem solvers and leaders of tomorrow. Our students are taught how to think freely, creatively and critically, and to develop their ability to collaborate in order to tackle demanding problems. We give our students the tools to explore and understand themselves and the world around them. Our alumni include Nobel Prize winners, ministers, ambassadors, business leaders and personalities from the world of culture.

Our study programmes are closely intertwined with current research, which is an important quality factor. The majority of our lecturers are also researchers and we place great importance

on ensuring that they are skilled educators. We are also keen to provide our students with opportunities to have their say in their education. Student representatives sit on all decision-making bodies of the University. We place strong emphasis on the employability of our students and deliver our programmes and courses in close collaboration with wider society.

Lund University is consistently the most popular choice for international students coming to study in Sweden. With students from more than 130 countries, the University is a meeting place which offers opportunities for international engagement, cultural exchange and life-long global networking. Many students also study part of their degree programme abroad, with a choice of exchange studies in approximately 70 countries all over the world.

Lund University offers a rich student life and is known for its variety of student organisations which offer great opportunities to get involved in extracurricular social activities.

EDUCATION IN BRIEF

NUMBER OF FREESTANDING COURSES:

1 444 (8 % taught in English)

NUMBER OF DEGREE PROGRAMMES:

Total 275:

- 88 leading to an undergraduate degree (10 % taught in English)
- 187 leading to a Master's degree, (79 % taught in English)
 - of which 32 leading to professional qualifications

SOCIAL ACTIVITIES:

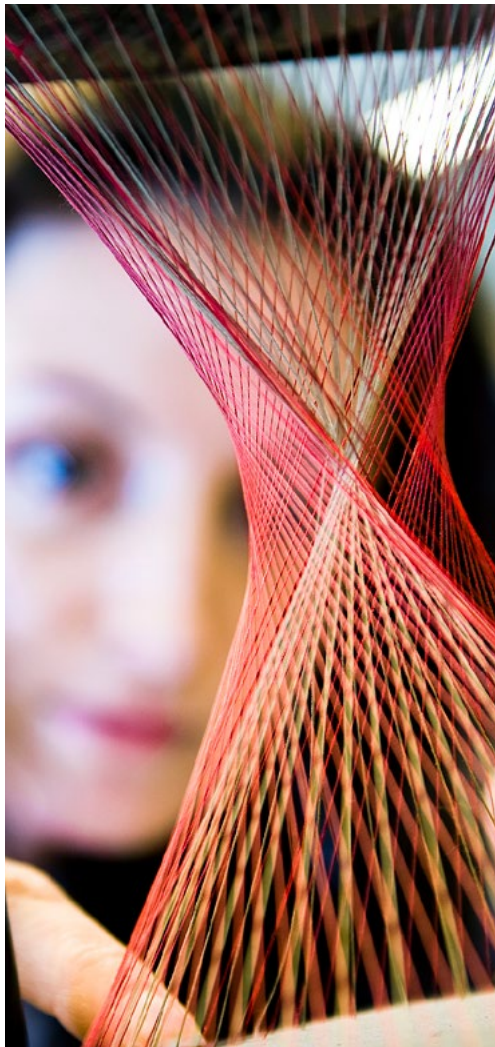
The rich student life in Lund offers a broad range of opportunities. Students can participate in student theatre, radio and TV productions, sports events, festivals, debating, mentoring programmes and much more.

ENTREPRENEURSHIP:

Through Lund University's innovation system, students with business ideas can get help with business development, patents, financing and office space while benefiting from a large network of potential cooperation partners.

CAREERS SUPPORT:

We have several career counselors and organise careers fairs and career-related seminars. Via our careers portal, students can get tips on jobs, degree project opportunities and internship and trainee vacancies, both in Sweden and abroad.



RESEARCH

World-leading research across the university

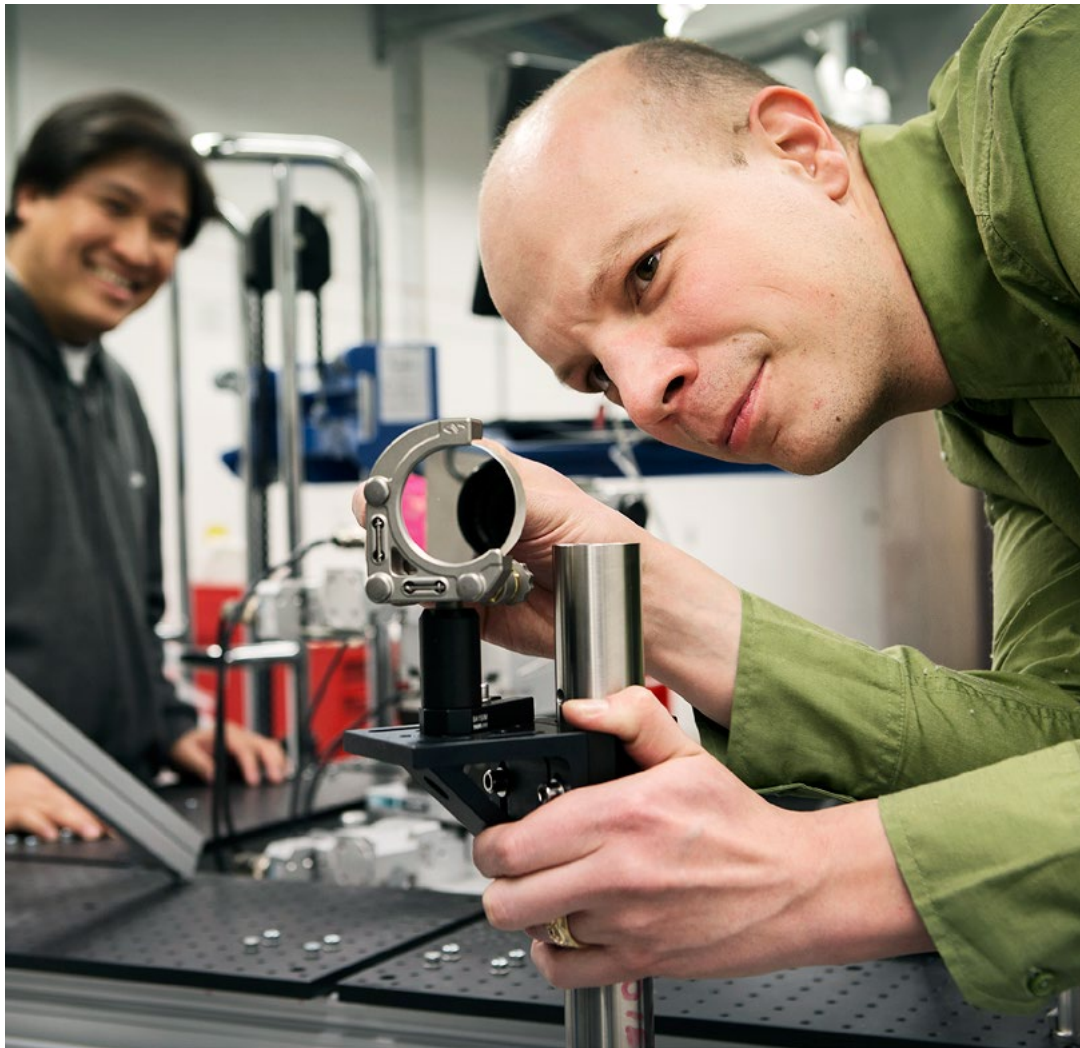
Lund University has a long-standing reputation for transformative, world-class research. The University leverages multidisciplinary research in climate and environmental science, demographics, diseases such as cancer and diabetes, and IT and mobile communications to tackle challenges that face mankind on a global scale.

Utilising our breadth and strengths in many key areas to solve problems in new ways, Lund has continual success in winning grants for large and interdisciplinary research areas, but the real value in these strategic research areas lies in mobilising world-class research to impact society. For example, our research impacts policy decisions, deepens understanding of underlying conditions for disease, develops future communications technologies, and builds on long-term research linking biobanks and databases to new understanding of how environmental factors, diet or migration affect long-term issues in public health.

With an annual research budget of around EUR 600 million across its nine faculties, Lund University offers one of the broadest research palettes in Scandinavia. Lund University stands out in the European research arena, receiving

more EU funding than any other Swedish university, most notably in individual excellence grants. We are one of the most active Swedish participants in the EU framework programmes for technical and economic development. The University is a member of the EU's largest collaboration on climate and innovation, Climate-KIC, collaborating with European universities and companies to find solutions to climate change. We are also a member of a consortium that is applying to establish a KIC within cultural and creative sectors and industries.

Lund University hosts the large-scale research facility MAX IV, which will be able to receive around 2 000 researchers per year once it is complete. Lund is also home to the European Spallation Source (ESS), which will be fully operational by the end of 2027. These facilities together with the new Lund University campus in Science Village will constitute a highly visible, world-leading center for research in materials and life sciences, cultural heritage and environmental science. The development of this science complex will create an international hub for research, education and innovation in which Lund University plays a central role.



EXAMPLES OF STRONG RESEARCH ENVIRONMENTS

- Ageing and supportive environments
- Biodiversity and ecosystem services
- Cancer research
- Climate modelling
- Diabetes research
- Epidemiology
- E-science
- Humanities Lab
- Information technology and mobile communications
- The International Institute for Industrial Environmental Economics
- Laser physics and spectroscopy
- MAX IV
- The Middle East in a Contemporary World
- Nanotechnology
- Neuroscience
- Stem cell therapy
- Sustainability science
- Sustainable production



COLLABORATION AND INNOVATION

A driving force in society

Lund University's wide subject range and ability to collaborate across disciplinary boundaries gives us unique opportunities to create new solutions that improve people's lives all over the world. As such, we have developed strong collaborations with public and private sectors as well as society at large. In this way, we tackle current problems and challenges, and make sure that the knowledge and research findings generated are put to good use.

For us, collaboration can refer to the utilisation of new knowledge in areas such as healthcare and education, administration and cultural activities, as well as to innovations in the form of new successful products, services or processes.

Our project managers encourage and facilitate collaboration between the University's researchers and external partners. Our innovation unit supports students and researchers whose ideas and research findings are potential innovations. One of the most famous innovations from Lund is ultrasound diagnostics, a method routinely used nowadays to examine patients in hospitals all over the world. Further examples

of innovations include the artificial kidney, which formed the basis for a multinational company, Gambro (now Baxter), and makes life easier for dialysis patients all over the world, and Bluetooth technology, developed together with Ericsson Mobile and used in millions of products every day.

Lund University's capacity for innovation is evident, not least through Ideon Science Park – the first of its kind in Sweden. A significant proportion of the more than 1 200 companies that have been active there since 1983 originated in research at Lund University.

We also collaborate by tailoring professional development programmes for companies, public authorities and organisations, and by offering courses and study programmes aimed at promoting lifelong learning in various areas.

In order to raise young people's interest in research and higher education, we cooperate with schools and arrange science shows and theme days. At the Vattenhallen Science Centre, the whole family can conduct experiments.

EXAMPLES OF INNOVATIONS FROM LUND

- 1946 The artificial kidney (Gambro)
- 1953 Diagnostic ultrasound
- 1967 Nicorette – nicotine gum to quit smoking
- 1971 Modern ventilator (ServoVentilator)
- 1984 Axis – printer and camera servers
- 1990 Oatly – oat drink
- 1991 Proviva – probiotic fruit drink
- 1993 Qlik – software for data visualisation
- 1995 Bluetooth
- 1997 Precise Biometrics – fingerprint reader
- 2005 Hövding – “invisible” bicycle helmet with airbag function
- 2010 SenzaGen – allergy testing without experiments on animals
- 2012 Orbital Systems – the world's most water-efficient shower
- 2012 Speximo – skin care using quinoa
- 2013 Endodrill – instrument for cancer diagnostics
- 2015 Elonroad – charging infrastructure for all electric vehicles
- 2018 Aimovig – preventive treatment of migraine

THINGS TO SEE AND DO AT LUND UNIVERSITY

1. The 16th century King's House (Kungshuset) was the University's first edifice and remained a centre for the University's activities for almost 200 years.
2. Lund University's Historical Museum is Sweden's second largest archaeological museum.
3. Lund University's Botanical Garden contains 7 000 plant species and attracts more than half a million visitors per year.
4. The annual doctoral conferment ceremony is a celebration of the 300–400 doctoral students who complete a PhD each year.
5. The Lundagård park is located in the heart of the city of Lund.
6. The main University building from 1882 was designed by Helgo Zettervall.
7. Skissernas Museum – Museum of Artistic Process and Public Art – is one of a kind and exhibits sketches, preliminary studies and models for art in the public environment.
8. The University Library is one of Sweden's largest and oldest research libraries. At least one copy of every item printed in the country is preserved here for future generations.
9. Vattenhallen Science Centre is an inspiring experimental workshop for amateur scientists of all ages.

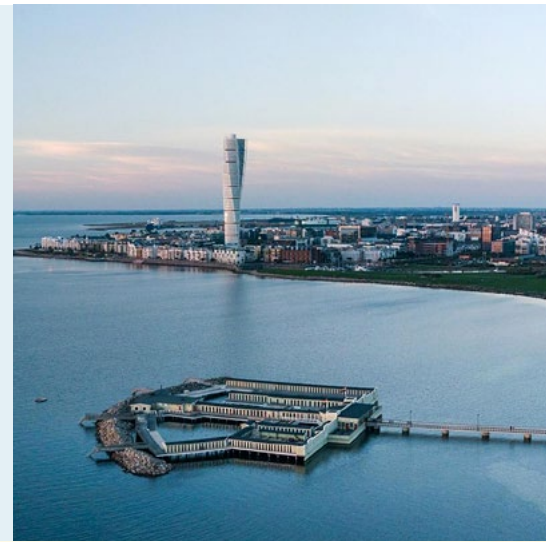






SWEDEN IN BRIEF

- Located in Scandinavia in Northern Europe
- Population: 10 million
- Home of the Nobel Prize
- Ranked among the world's most innovative, creative and democratic countries
- One of the world's highest levels of proficiency in English as a second language
- Ranked as one of the best countries to live in
- An open multicultural society with one of the highest levels of gender equality
- Well known for its eco-friendly culture



LUND AND GREATER COPENHAGEN

A dynamic science region

The University has been making its mark on Lund for 350 years and the University campus occupies large areas of the city. Lund has a compact and charming city centre where everything is within cycling distance. Students and researchers, coming from more than 130 countries, create a truly international and vibrant atmosphere.

Lund is a city of contrasts in which a thousand years of history meet the very latest in modern science. The city centre is small and picturesque, with historical features such as the cathedral and the winding cobble-stoned streets. At the same time, new neighbourhoods are expanding in connection with Ideon Science Park and the MAX IV and ESS research facilities. Medicon Village is a life science village for research, innovation and business. There are more than 2 600 people working here to improve the conditions for future patients. Lund University is one of the largest member organisations.

Lund University is located in the Southern part of Sweden, and has activities in Lund, Malmö, Helsingborg and Ljungbyhed. More than 85 per cent of the University's education and research are conducted in Lund. Activities at Campus

Helsingborg mainly involve social sciences, humanities and technology. In Malmö, we have the Academy of Music, the Art Academy and the Theatre Academy, as well as parts of the Faculty of Medicine. Ljungbyhed is the site of the Lund University School of Aviation.

The area is also called the Greater Copenhagen region, where everything is within reach – from Lund, it takes about 10 minutes by train to get to Malmö, 28 minutes to Helsingborg and 45 minutes to Copenhagen and its international airport. Every day, some 18 000 people commute over the Öresund bridge between Sweden and Denmark.

The Greater Copenhagen region consists of Skåne and eastern Denmark, with a population over 4 million. Around 10 500 researchers, 140 000 students, 7 science parks and 13 higher education institutions make this one of Scandinavia's most knowledge-intensive areas. Here, local startups work side by side with well-known international corporations.

In the region, there are also good opportunities for rewarding leisure time with vibrant city life and beautiful nature just beyond city limits.





350 years of Lund University

When Lund University was founded in 1666, Sweden was a great power that had conquered the province of Skåne from Denmark eight years previously. Immediately after the Swedish victory, the Bishop of Lund, Peder Winstrup, proposed that Lund should acquire an academy, since the youth of Skåne could no longer study in Copenhagen. The decision was delayed, but in the end pastor Bernhard Oelreich succeeded in convincing the regency government of Karl XI, under dowager queen Hedvig Eleonora, to found the University. During the Middle Ages, Lund had already been a centre of religious learning with an early form of higher education institution and an upper secondary school which is still operational.

Initially, the young academy had four faculties with 14 professors and 80 students – but no premises. Until 1688, when the University took over the King's House, most of the teaching took place in the Cathedral. The first set of lecturers had a clear international profile, with Saxon legal scholar Samuel Pufendorf the best known among them. In 1676, however, the University was forced to close because of a Danish invasion, only reopening in 1682, with mainly Swedish lecturers at this point.

The University's finances were strained for a long time, yet the academy grew during the 1700s and a park was laid out in Lundagård, along with a botanical garden on what is now the University square. During the early 1800s, the University experienced a period of brilliance marked by the polymath geniuses Esaias Tegnér and Carl Adolph Agardh. It was also in the 1800s that the University started conducting research in the modern sense, and new premises were built, including the main University building in 1882. In 1880, the first female student was enrolled but it was not until the 1960s that the first female professor was appointed.

During the 1900s, the University continued to expand in Lund, Malmö and Helsingborg. The number of students and staff grew steadily. The faculties also became more numerous – there are currently nine. Over the past century, a series of pioneering research findings and innovations have put Lund University on the map, as have the generations of students who, after completing their studies, have gone out and contributed to society, in Sweden and worldwide.

Lund University in figures (2021)

Education

STUDENTS	No
Individuals, total over year	46 000
Individuals, per semester	35 000
Full-time equivalents	29 000

INTERNATIONAL STUDENTS

Total	27 %
At Master's level	44 %
Exchange students, outgoing	700
Exchange students, incoming	1 000
Other international students	9 970

STUDY PROGRAMMES AND COURSES

	No
Freestanding courses	1 444
Study programmes total	275
– leading to an undergraduate degree	88
– leading to a Master's degree	187
– of which professional qualifications	32

DISTRIBUTION OF STUDENTS

Undergraduate, programmes	51 %
Undergraduate, freestanding courses	22 %
Master's, programme	25 %
Master's, freestanding courses	2 %

DEGREES AWARDED

General

Bachelor's	2 870
Master's	2 600

Professional

Bachelor's	750
Master's	1 800
PhD	400

Research

RESEARCH STUDENTS

Individuals	2 800
– of whom new students	450

INTERNATIONAL RESEARCH STUDENTS

Total	46 %
-------	------

NO. OF PUBLICATIONS (2020)

	5 770
--	-------

LARGEST

FUNDING BODIES

	SEK/EUR million
Swedish Research Council	1 060/103
EU	257/25
Knut & Alice Wallenberg Foundation	225/22
Formas	162/16
The Swedish Cancer Society	147/14

Staff

EMPLOYEES

Individuals, of whom	No 8 400
– professors	840
– other academic staff, researchers and employed research students	4 780
– technical and administrative staff	2 890

INTERNATIONAL STAFF

Researchers	54 %
Academic staff	35 %

Finances

REVENUE

Total SEK 9,4 billion/EUR 912 million, of which:	
– direct government funding	55 %
– external funding	45 %

EXPENDITURE

Total SEK 9,3 billion/EUR 902 million, of which:	
– staff	69 %
– premises	12 %
– other	19 %

Ranking

	QS	Times Higher Education	Shanghai Ranking
2021/22	87	116	151–200

LUND UNIVERSITY ALUMNI NETWORK

Former students, researchers and staff members are welcome to join the Lund University Alumni Network. As a member in this global network, you can expand your social and professional networks while also enhancing and supporting the University. Take part in events, enjoy special offers and receive the latest news from the University.

Register at lunduniversity.lu.se/alumni and follow us on [instagram.com/alumni_lunduniversity](https://www.instagram.com/alumni_lunduniversity)

SUPPORT LUND UNIVERSITY

As a donor, you will contribute to ensuring that Lund University will remain one of the world's leading higher education institutions and an important part of social development. Learn more about how to contribute at lunduniversity.lu.se/donate



MORE INFORMATION

Website: lunduniversity.lu.se

Facebook: facebook.com/lunduniversity

Twitter: twitter.com/lunduniversity

LinkedIn: linkedin.com/school/lunduniversity

Instagram: instagram.com/lunduniversity

YouTube: youtube.com/lunduniversity

Production and layout: Corporate Communications, Lund University.

Photos: Page 1: Kennet Ruona, Johan Persson, Kennet Ruona. Page 2: Johan Persson. Page 3: Kennet Ruona. Page 4: Johan Persson. Page 6: Kennet Ruona. Page 7: Johan Båvman. Page 8: Kennet Ruona. Page 10: Johan Persson, Kennet Ruona, Johan Persson, Kennet Ruona. Page 11: Johan Persson, Kennet Ruona, Åke E:son Lindman, Kennet Ruona, Kennet Ruona. Page 12: Johan Persson, Karol Werner, Kennet Ruona, Reffen. Page 13: MAX IV. Page 14: Kennet Ruona.

Printed by: Media-Tryck, Lund University, 2022.



LUND UNIVERSITY

PO Box 117
SE-221 00 Lund
Sweden

Telephone +46 46 222 00 00
www.lunduniversity.lu.se